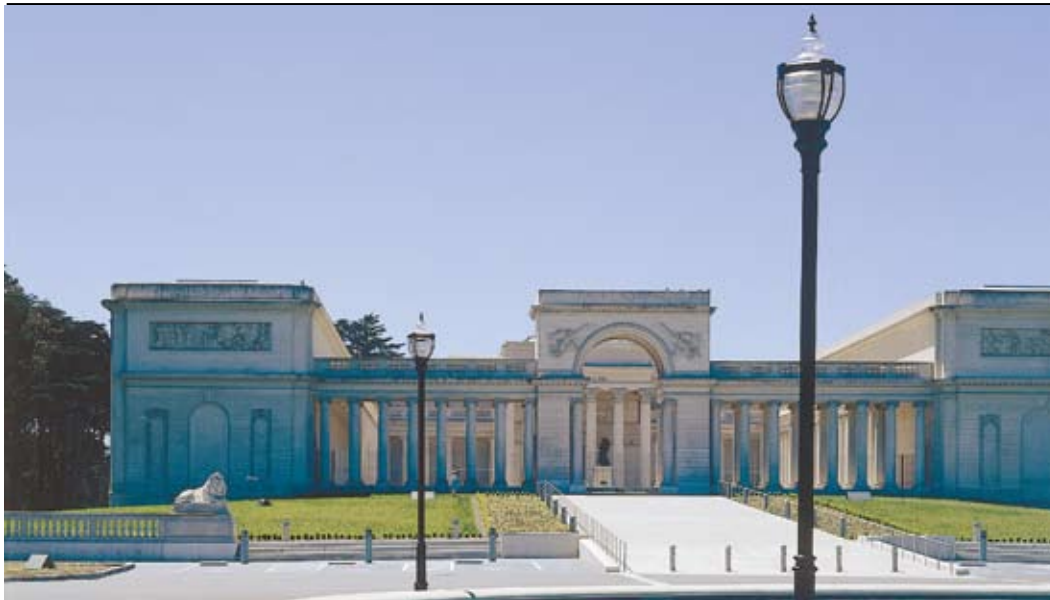


1	2	3	4	5	6										7		
LUMINAIRE	DECORATIVE STYLE	GLOBE STYLE	OPTIC STYLE	LAMP/BALLAST	OPTIONS										COLOR		



FEDERAL GLOBE
SMALL SCALE HOUSING



FGS



FEDERAL GLOBE FAMILY OF FIXTURES



FGS



FGL



FGS LED



FGL LED

Features

- Two fitter designs to accommodate architectural requirements
- Available with choice of three different optical systems, including patented ContraCline®, internal and external Refractors and Bare Lamp
- Energy efficient light sources range from LED to 100MH up to 400PSMH, including induction lamp system
- Cut off shield available to reduce uplight
- Integrated hinged capital offers tool-less access to lamp and ballast compartments
- Replaces the Pedestrian ContraCline® families
- IP66 rated (SAL) IP55 rated (all others)
- Powder coat finish in 13 standard colors with a polymer primer sealer

JOB INFORMATION
TYPE

JOB NAME

LAMP (BY OTHERS)

CUSTOMER

DATE

Consult factory for any custom/modified products

APPROVALS

1	2	3	4	5	6								7	
LUMINAIRE	DECORATIVE STYLE	GLOBE STYLE	OPTIC STYLE	LAMP/BALLAST	OPTIONS								COLOR	

1. LUMINAIRE

FGS Federal Globe - Small Scale Housing

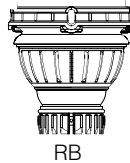
FGS Federal Globe LED - Small Scale Housing

Post top mount. Slips over a 4"/100 mm O.D. pole

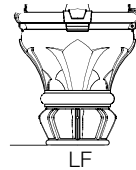
2. DECORATIVE STYLE

RB Rib Fitter Design

LF Leaf Fitter Design



RB



LF

3. GLOBE STYLE

LL3 Lindy®Lens Globe Type 3

LL5 Lindy®Lens Globe Type 5

SAL Standard Acorn Globe. One piece globe. **Available with LED.**

4. OPTICAL SYSTEM

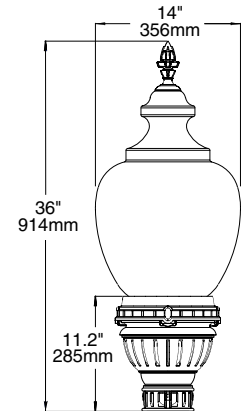
T5 Type 5 distribution. **For LED only.**

CCO ContraCline® Optic

GR3 Type 3 distribution. Glass Refractor Optic (Max 150PSMH & 150HPS)

GR5 Type 5 distribution. Glass Refractor Optic (Max 150PSMH & 150HPS)

BLO Bare Lamp Optic



JOB INFORMATION

TYPE

JOB NAME

LAMP (BY OTHERS)

CUSTOMER

DATE

Consult factory for any custom/modified products

APPROVALS

1	2	3	4	5	6										7		
LUMINAIRE	DECORATIVE STYLE	GLOBE STYLE	OPTIC STYLE	LAMP/BALLAST	OPTIONS										COLOR		

5. LAMP/BALLAST

- 35LED-BW** 42 LED array. (32.9 total input watts) Bright white (5000K).
Class 1, 120 thru 277 volt.

- 50MH** 50 watt metal halide 120/208/240/277 volt ballast. Use medium base, ED-17 lamp.

- 70MH** 70 watt metal halide 120/208/240/277 volt ballast. Use medium base, ED-17 lamp.

- 100MH** 100 watt metal halide 120/208/240/277 volt ballast. Use medium base, ED-17 lamp.

- 150PSMH** Pulse start 150 watt metal halide 120/208/240/277 volt ballast. Use medium base, ED-17 lamp.

- 50HPS** 50 watt high pressure sodium 120/277 volt ballast. Use medium base, ED-17 lamp.

- 70HPS** 70 watt high pressure sodium 120/208/240/277 volt ballast. Use medium base, ED-17 lamp.

- 100HPS** 100 watt high pressure sodium 120/208/240/277 volt ballast. Use medium base, ED-17 lamp.

- 150HPS** 150 watt high pressure sodium 120/208/240/277 volt ballast. Use medium base, ED-17 lamp.

- IL55** 55 watt, induction lamp system with high frequency generator. Specify 120, 208, 240 or 277 volt. -25° C min start temp.
For BLO only.

- IL85** 85 watt, induction lamp system with high frequency generator. Specify 120, 208, 240 or 277 volt. -25° C min start temp.
For BLO only.

** For all Pulse Start Ballasts be certain to use lamps rated for vertical burning. All ballasts are factory wired for 277 volts, unless specified. Lamps not included (except IL options). All applicable ballasts are EISA compliant.*

JOB INFORMATION TYPE <hr/> JOB NAME <hr/> LAMP (BY OTHERS) <hr/> CUSTOMER <hr/> DATE <hr/> <p style="font-size: small; text-align: center;"><i>Consult factory for any custom/modified products</i></p> <div style="border: 1px solid black; height: 100px; width: 100%; margin-top: 10px;"> <p style="text-align: center; font-weight: bold; margin-top: 5px;">APPROVALS</p> </div>



1	2	3	4	5	6										7		
LUMINAIRE	DECORATIVE STYLE	GLOBE STYLE	OPTIC STYLE	LAMP/BALLAST	OPTIONS										COLOR		

6. OPTIONS

- FS1 Single Fuse Holder (fuse by others). **HID only**

- FS2 Double Fuse Holder (fuse by others). **HID only**

- 347 347 volt ballast (120/277/347V). **HID only**

- ASY Asymmetric reflector - field installed. **Only available with CCO.**

- HSS House side shield, field installed. Includes asymmetric assembly.
Only available with CCO.

- TA3 Tenon adaptor slips over a 3"/75 mm O.D. by 4"/100 mm long. Secures to the pole with four stainless steel set screws.

- TA23 Tenon adaptor slips over a 2 3/8" O.D. by 4"/100 mm long. Secures to the pole with four stainless steel set screws.

- AD5 Adaptor to slip over a 5"/125mm O.D. pole and is 4"/100mm long. Secures to the pole with four stainless steel set screws.

- ALF Cast filigree basket. **For SLG globe only.**

- COS Cut off shield - reduces uplight. Factory installed.
Not available with GR3 or GR5.

- PHC Photo control kit. Available in 120V & 277V. Specify line voltage.

7. COLOR

- | | |
|--|---|
| <input type="checkbox"/> AWT Arctic White | <input type="checkbox"/> MAL Matte Aluminum |
| <input type="checkbox"/> BLK Black | <input type="checkbox"/> MDG Medium Grey |
| <input type="checkbox"/> MTB Matte Black | <input type="checkbox"/> ATG Antique Green |
| <input type="checkbox"/> DGN Dark Green | <input type="checkbox"/> LGY Light Grey |
| <input type="checkbox"/> DBZ Dark Bronze | <input type="checkbox"/> RAL/
PREMIUM
COLOR |
| <input type="checkbox"/> WRZ Weathered Bronze | Provide a RAL 4 digit color number |
| <input type="checkbox"/> BRM Metallic Bronze | <input type="checkbox"/> CUSTOM
COLOR |
| <input type="checkbox"/> VBL Verde Blue | Please provide a color chip for matching |
| <input type="checkbox"/> CRT Corten | |

JOB INFORMATION

TYPE _____

JOB NAME _____

LAMP (BY OTHERS) _____

CUSTOMER _____

DATE _____

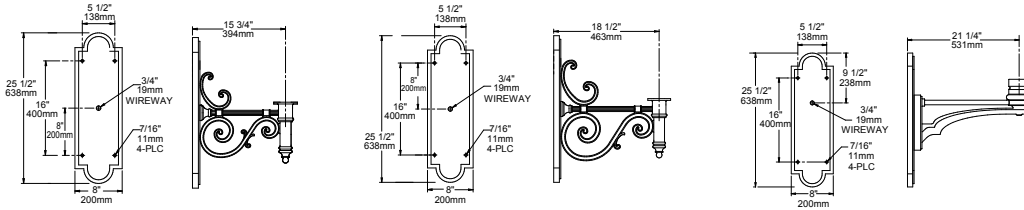
Consult factory for any custom/modified products

APPROVALS

1	2	3	4	5	6								7	
LUMINAIRE	DECORATIVE STYLE	GLOBE STYLE	OPTIC STYLE	LAMP/BALLAST	OPTIONS								COLOR	

8. MOUNTING

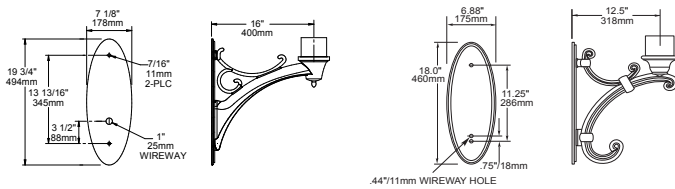
WALL MOUNT



WMA 1M

WMA 1L

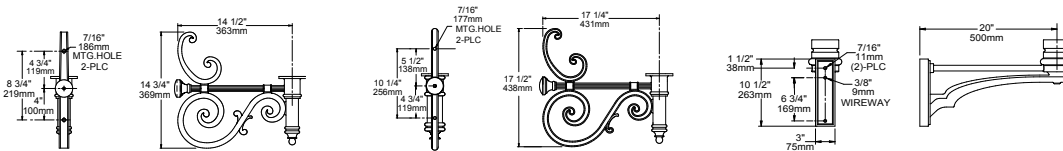
WMA 55



WMA 56

WMA 57

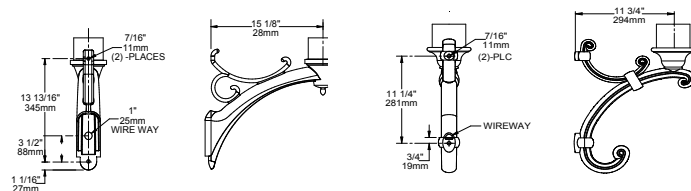
POLE MOUNT



TRA 1M

TRA 1L

TRA 55



TRA 56

TRA 57

JOB INFORMATION

TYPE _____

JOB NAME _____

LAMP (BY OTHERS) _____

CUSTOMER _____

DATE _____

Consult factory for any custom/modified products

APPROVALS

1	2	3	4	5	6								7	
LUMINAIRE	DECORATIVE STYLE	GLOBE STYLE	OPTIC STYLE	LAMP/BALLAST	OPTIONS								COLOR	

HOUSING

Decorative, cast aluminum fitter shall support the lamp base, reflector assembly and luminaire housing. The slip fitter shall slip over a 4"/100mm O.D. pole, and secure with four 5/16-18 stainless steel set screws. Lamp and ballast compartments shall be tool-less accessible through a hinged capital. The ballast is accessible by lifting ballast plate by handle.

ELECTRICAL

Fixture shall be E.T.L approved for use in outdoor wet locations. Ballast shall be high power factor multi-tap style (120/208/240/277V). Sockets shall be pulse rated porcelain. The electrical assembly shall be factory wired and installed in the fixture. Quick electrical disconnects shall be provided as standard

OPTICAL SYSTEMS

The ContraCline® optical system is a multi-tiered reflector assembly composed of four reflective elements for Type 5 or six reflector elements for Type 3. Peak candela shall be at 70° and sharp cutoff at 80°. Lamp (by others) shall be in a vertical, base down burn position.

Other optical systems available consist of an internal glass refractor optic, which features a GR3 for Type 3light distribution and GR5 for the Type 5 light distribution (up to 150PSMH and 150HPS), external refractor globes in non-yellowing acrylic, as well as a bare lamp optic.

FINISH

Finish consists of a five stage pretreatment regimen with a polymer primer sealer, oven dry off and top coated with a thermoset super TGIC polyester powder coat finish. The finish shall meet the AAMA 605.2 performance specification which includes passing a 3000 hour salt spray test for corrosion resistance.

CERTIFICATION

Listed with E.T.L for outdoor, wet location use, in all mounting orientations, conforms to UL1598 and Can Canadian CSA Std. C22.2 no.250 standard. IP66 (FGS-SAL)

WARRANTY 5 YEAR WARRANTY

Federal Globe LED, including housing, LEDs and electrical components, is warranted for five years. Non LED fixture is warranted for three years. Ballast components carry the ballast manufacturer's limited warranty. Any unauthorized return, repair, replacement or modification of the Product(s) shall void this warranty. This warranty applies only to the use of the Product(s) as intended by AAL and does not cover any misapplication or misuse of said Product(s), or installation in hazardous or corrosive environments.

AAL reserves the right to change product specifications without notice.

Specifications

Patented



JOB INFORMATION

TYPE _____

JOB NAME _____

LAMP (BY OTHERS) _____

CUSTOMER _____

DATE _____

Consult factory for any custom/modified products

APPROVALS