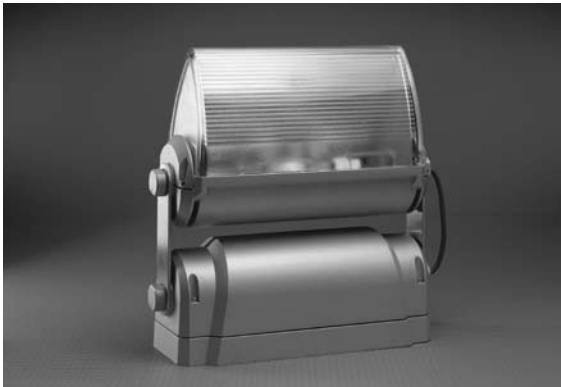


Cypher™

PRECISION FLOODLIGHTING



twin pendant mounting



perforated hood option

Architectural Area Lighting

16555 East Gale Ave. | City of Industry | CA 91745
P 626.968.5666 | F 626.369.2695 | www.aal.net
Design patents, Copyright © 2010 Rev 01/2010

CPH _____ / _____ / _____ / _____
 FIXTURE COLOR OPTIONS MOUNTING OPTIONS
 1 2 3 4

1 FIXTURE

T6 CERAMIC METAL HALIDE LAMPS

- CPH-70MHT6 G12 base, 70 watt 120/277volt magnetic ballast
- CPH-150MHT6 G12 base, 150 watt 120/208/240/277 volt magnetic ballast
- CPH-70MHT6EB G12 base, 70 watt lamp, electronic ballast, 120 thru 277 volts
- CPH-150MHT6EB G12 base, 150 watt lamp, electronic ballast, 120 thru 277 volts

ED-17 STANDARD OR CERAMIC METAL HALIDE LAMPS

- CPH-70MH Medium base, 70 watt 120/208/240/277 volt magnetic ballast
- CPH-100MH Medium base, 100 watt 120/208/240/277 volt magnetic ballast
- CPH-150MH Medium base, 150 watt 120/208/240/277 volt magnetic ballast
- CPH-70MHEB Medium base, 70 watt lamp, electronic ballast 120 thru 277 volts
- CPH-100MHEB Medium base, 100 watt lamp, electronic ballast 120 thru 277 volts
- CPH-150MHEB Medium base, 150 watt lamp, electronic ballast 120 thru 277 volts

ED-28 OR T-15 METAL HALIDE LAMPS

- CPH-200MH Mogul base, 200 watt 120/208/240/277 volt magnetic ballast
- CPH-250MH Mogul base, 250 watt 120/208/240/277 volt magnetic ballast

ED-28 PULSE START METAL HALIDE LAMPS

- CPH-250PSMH Mogul base, 250 watt pulse start lamp, 120/208/240/277 volt magnetic ballast

ED-23 1/2 AND ED-18 HIGH PRESSURE SODIUM LAMPS

- CPH-150HPS Mogul base, 150 watt 120/208/240/277 volt magnetic ballast (ED-23 1/2)
- CPH-250HPS Mogul base, 250 watt 120/208/240/277 volt magnetic ballast (ED-18)

HIGH OUTPUT PL-T BIAX LAMPS

- CPH-PL57 57 watt high output (GE) lamp with electronic ballast, 120 thru 277 volts
- CPH-PL70 70 watt high output (GE) lamp with electronic ballast, 120 thru 277 volts
- CPH-PLH 60, 80 or 120 watt high output (Philips) lamp with electronic ballast, 120 thru 277 volts

INCANDESCENT LAMPS

- CPH-INC PS-25 medium base, maximum 300 watts

Architectural Area Lighting

2 COLOR

- | | |
|---------------------------------------|-----------------------------------|
| <input type="checkbox"/> WHT | White |
| <input type="checkbox"/> MAL | Matte aluminum |
| <input type="checkbox"/> BLK | Black |
| <input type="checkbox"/> RAL | Please submit an RAL color number |
| <input type="checkbox"/> CUSTOM COLOR | Please submit a color chip |

3 OPTIONS

- | | |
|------------------------------|---|
| <input type="checkbox"/> SYM | Symmetric light output with an internal secondary glass refractor and lower peened reflector. Suitable for wall, ceiling or pendant mounting. |
| <input type="checkbox"/> PRF | Perforated shield, painted to match the fixture. |
| <input type="checkbox"/> SHD | Shielding hood, painted to match the fixture. |
| <input type="checkbox"/> ASH | Hood with two adjustable blades for controlling lens spill, painted to match fixture. |
| <input type="checkbox"/> RCK | Rock guard, painted to match the fixture. |
| <input type="checkbox"/> CFH | Color filter holder, painted to match the fixture. Color filters are available from Special FX. |



SYM



PRF



SHD



ASH



RCK



CFH

Architectural Area Lighting

4 MOUNTING OPTIONS

- YK** Stainless steel yoke with 15' waterproof black cable for connection to a remote ballast. Ballast enclosure by others. Maximum distance for electronic ballasts is 5 feet from lamp.

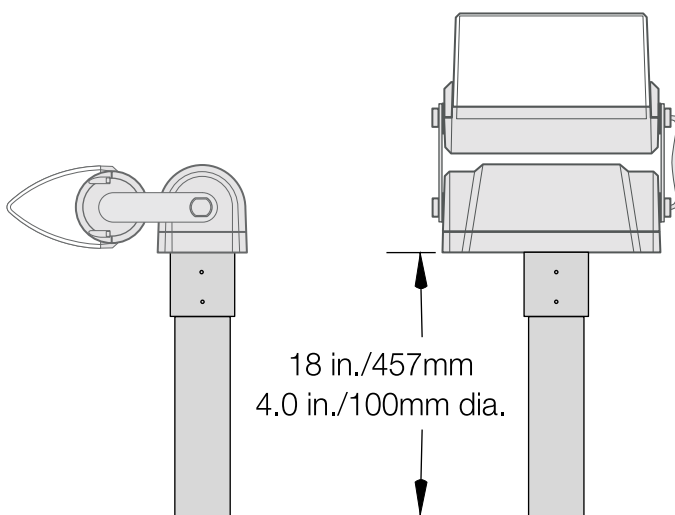
- MST** Cast stanchion mount with an 18"/460mm x 4"/100mm o.d. aluminum post, painted to match the fixture. Cast collar attaches to the fixture and slips over the extruded aluminum post. Secured with six stainless steel set screws.

- SPN** Single fixture pendant with a 48"/1220mm stem, 45 degree swivel joint mounts to a standard j-box. The stem and cover are painted to match the fixture.

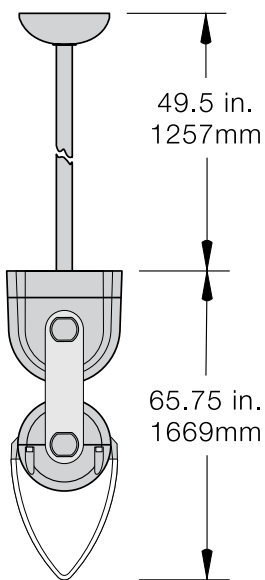
- TPN** Dual fixture pendant with a 48"/1220mm prewired stem, 45 degree swivel joint mounts to a standard j-box. The 8"/400mm long center hub has an access cover at each end. The assembly is painted to match the fixture.



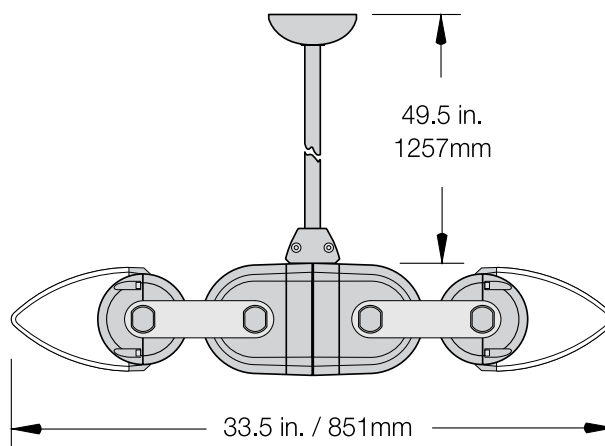
YK



MST



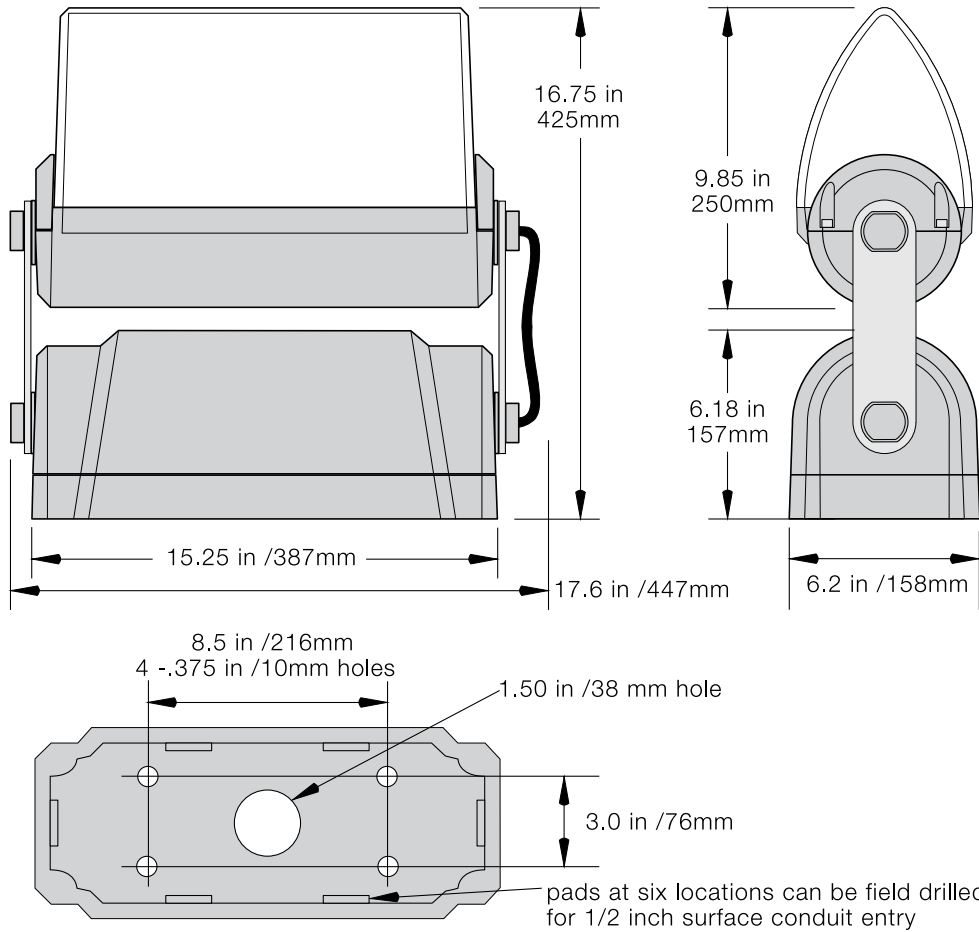
SPN



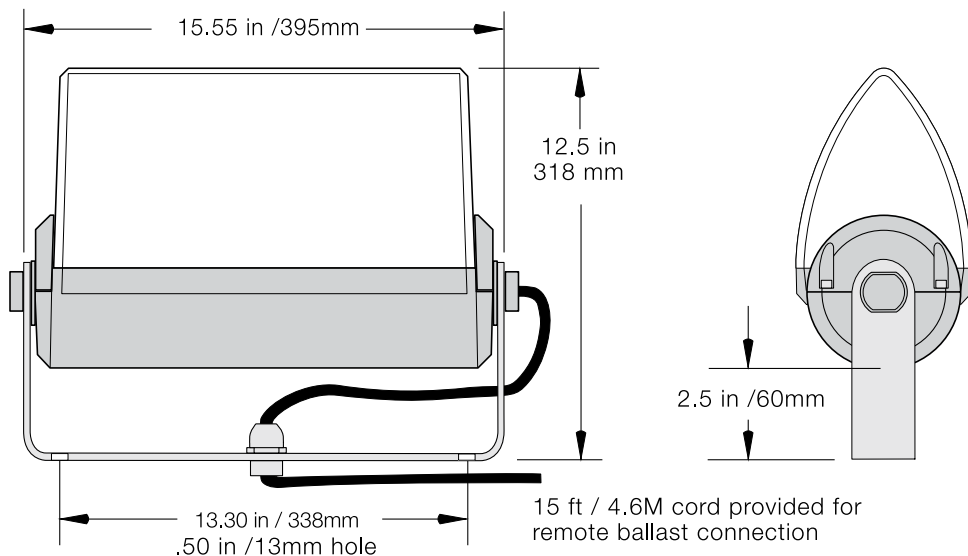
TPN

Architectural Area Lighting

Dimensional data: Standard weight 32 lbs.



Dimensional data for yoke mount with remote ballast (ballast enclosed by others)



Architectural Area Lighting

HOUSING

The lamp module and ballast module are die cast aluminum. The glass refractor lens is one piece clear, tempered borosilicate glass attached to two die cast end plates for securing to the lamp housing. Four captive stainless steel cap nuts are loosened to remove the lens for relamping. The lens is sealed to the lamp housing with a full surround silicone gasket. The lamp housing reflector is die formed specular aluminum. The lamp housing is attached to the ballast compartment with two stainless steel arms. The arms are secured to the housing(s) with die cast cap nuts. A five conductor sanoprene jacketed cord with internal silicone cord seal is between the lamp and ballast compartment. The lamp module can rotate 180 degrees and be locked into place. The ballast compartment cover is attached to the two stainless steel arms which can be rotated at 90 degree increments. The mounting plate attaches to the wall or other mounting surface. A ballast tray attaches to the plate for easy ballast removal. The mounting plate can accept half inch surface conduit at six locations around the perimeter. The fixture attaches to the mounting plate with four captive stainless steel bolts and is sealed with a memory retentive, molded silicone gasket.

ELECTRICAL MODULE

The ballast is mounted on a prewired plate with a quick disconnect plug and removed by loosening four captive screws. Magnetic metal halide ballasts are high power factor, rated for -20°F starting. Electronic metal halide ballasts are rated for -20°F starting, sound rating A. 120 through 277 volt. Fluorescent biax electronic transformers are sound rated A with a minimum starting temperature of 32°F. Multi-tap ballasts are wired at the factory for 277 volts. All HID sockets are pulse rated porcelain.

FINISH

Fixture finish consists of a five stage pretreatment regimen with a polymer primer sealer, oven dry off and top coated with a thermoset super TGIC polyester powder coat finish. The finish shall meet the AAMA 605.2 performance specification which includes passing a 3000 hour salt spray test for corrosion resistance.

INSTALLATION

The mounting plate of the ballast housing has a center wiring hole and four mounting holes. A silicone foam gasket is provided on the outside of the backplate to seal the j-box and mounting holes. Irregular surfaces may require additional caulking to seal the backplate and j-box. The mounting plate perimeter has six cast in locations suitable for field drilling to accept 1/2 inch conduit for surface conduit applications. The fixture attaches to the backplate with four captive socket cap allen head bolts.

CERTIFICATION

The fixture is listed with ETL for outdoor, wet location use, in all mounting orientations (except for ceiling mount), UL1598 and Canadian CSA Std. C22.2 No.250. IP=66
Manufactured and assembled in the U.S.A. of 100% U.S. materials

EISA COMPLIANCE

AAL is committed to complying with U.S. EISA requirements. All applicable products manufactured for sale in the United States after January 1, 2009, meet EISA requirements.

WARRANTY

Fixture is warranted for three years. Ballast components carry the ballast manufacturer's limited warranty. Any unauthorized return, repair, replacement or modification of the Product(s) shall void this warranty. This warranty applies only to the use of the Product(s) as intended by AAL and does not cover any misapplication or misuse of said Product(s), or installation in hazardous or corrosive environments. Contact AAL for complete warranty language, exceptions, and limitations.

Architectural Area Lighting

16555 East Gale Ave. | City of Industry | CA 91745
P 626.968.5666 | F 626.369.2695 | www.aal.net
Design patents. Copyright © 2010 Rev 01/2010